

Sample Information

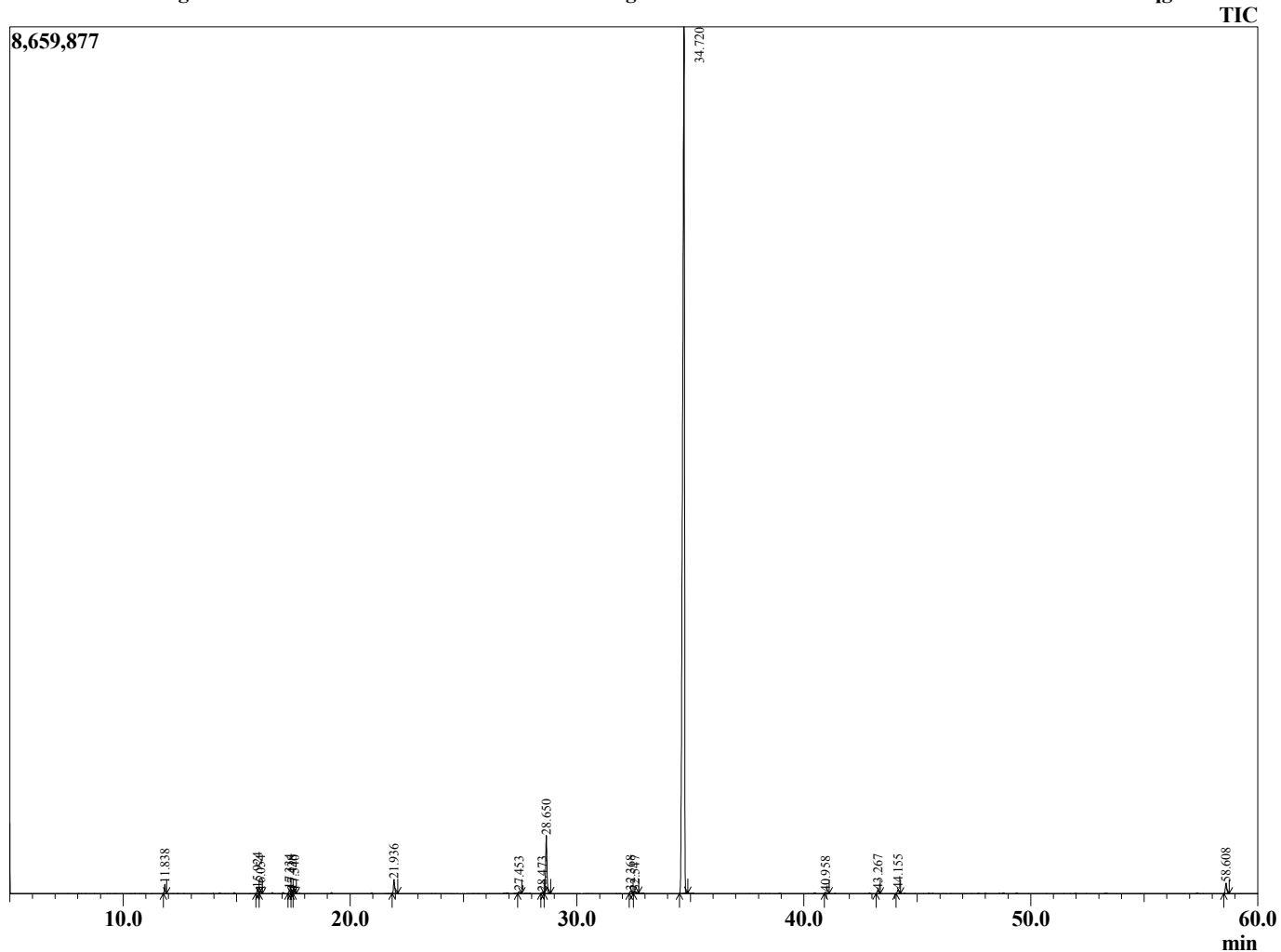
Analyzed by : Tanner Wortham
 Analyzed : 10/24/15 8:10:00 PM
 Sample Type : Essential Oil
 Sample Name : Anise Star
 Sample ID : B151019V
 Injection Volume : 0.10
 Data File : C:\Users\Tanner Wortham\Google Drive\Academic GC Raw Data\Anise Star B151



Peak Report TIC

R.Time	Name	Area%
11.838	Pinene <alpha>	0.49
15.924	Phellandrene <alpha->	0.31
16.054	3-Carene	0.17
17.334	Limonene	0.24
17.438	Phellandrene <beta->	0.19
17.540	1,8-cineole	0.17
21.936	Linalool	1.00
27.453	Terpinen-4-ol	0.16
28.473	Terpineol <alpha>	0.09
28.650	Methyl chavicol	4.13
32.368	Anethole <cis->	0.20
32.547	Anisaldehyde <para->	0.21
34.720	Anethole <trans->	91.10
40.958	Anisyl methyl ketone	0.12
43.267	Caryophyllene <trans->	0.28
44.155	Bergamotene <trans-alpha>	0.32
58.608	Foeniculin	0.83
		100.00

Chromatogram Anise Star C:\Users\Tanner Wortham\Google Drive\Academic GC Raw Data\Anise Star B151019V.qgd



Comments:

Typical Ranges of Main Components: