

Sample Information

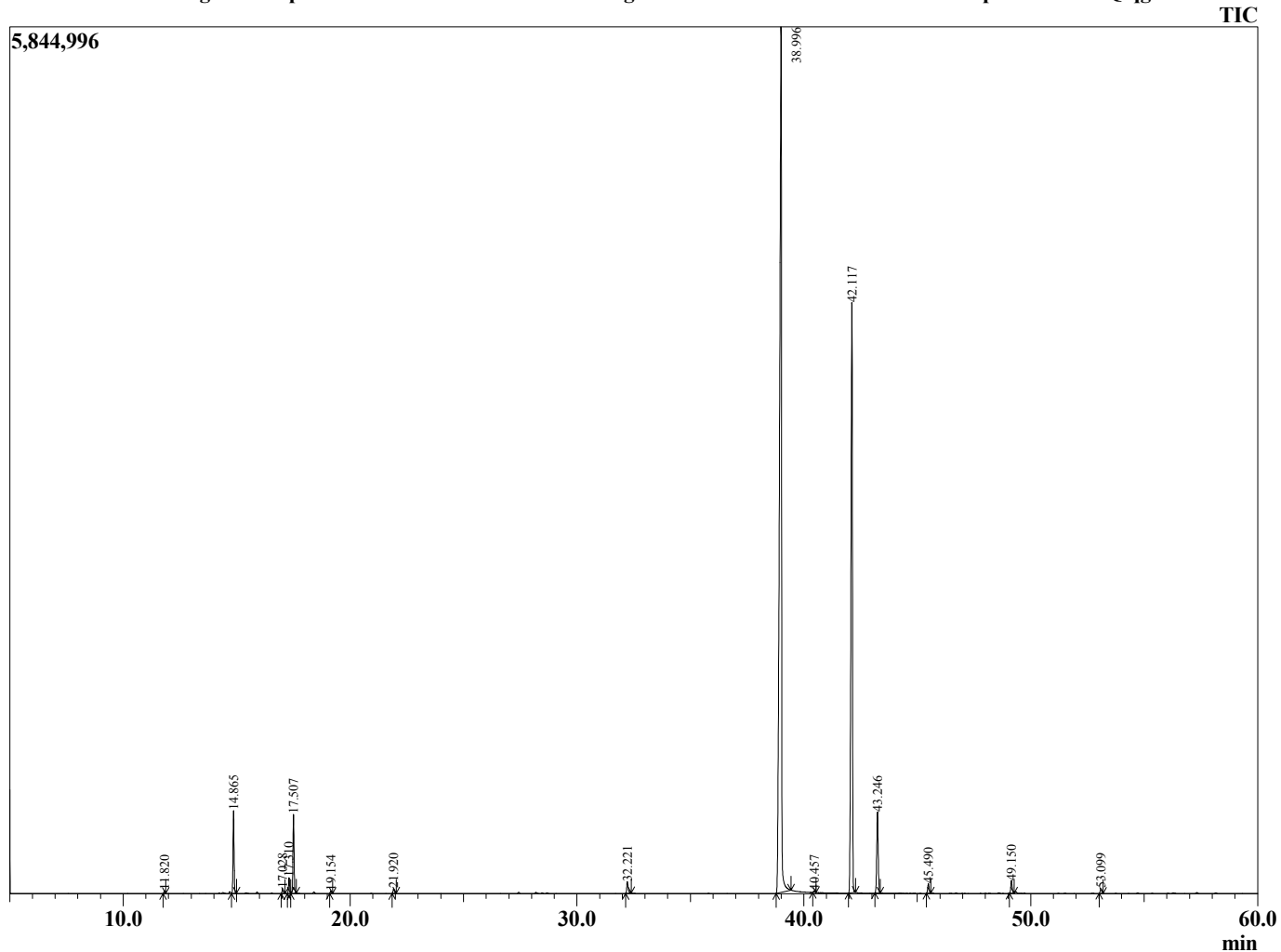
Analyzed by : Tanner Wortham
 Analyzed : 10/23/15 6:59:40 AM
 Sample Type : Essential Oil
 Sample Name : Allspice
 Sample ID : B151019AQ
 Injection Volume : 0.10
 Data File : C:\Users\Tanner Wortham\Google Drive\Academic GC Raw Data\Allspice B15101



Peak Report TIC

R.Time	Name	Area%
11.820	Pinene <alpha>	0.09
14.865	Myrcene	2.90
17.028	Cymene <para->	0.19
17.310	Limonene	0.59
17.507	1,8-cineole	2.99
19.154	Terpinene <gamma>	0.10
21.920	Linalool	0.21
32.221	Chavicol	0.57
38.996	Eugenol	57.44
40.457	Copaene <alpha>	0.08
42.117	Methyleugenol	29.63
43.246	Caryophyllene <trans>	3.92
45.490	Humulene <alpha>	0.46
49.150	Eugenol <acetate>	0.58
53.099	Caryophyllene oxide	0.24
		100.00

Chromatogram Allspice C:\Users\Tanner Wortham\Google Drive\Academic GC Raw Data\Allspice B151019Q.qgd



Comments:

Typical Ranges of Main Components: